



THE NEXT GENERATION
"OPTICAL DRIVE EMULATION"

INSTALLATION GUIDE



INDICE

Installation Kit.....	pag. 2
Phase 1 (Wii opening).....	pag. 3
Phase 2 (Wode installation).....	pag. 7
DISASSEMBLING AND INSTALLING VERTICAL STAND.....	pag. 11
Troubleshooting.....	pag. 13

INSTALLATION GUIDE

WODE JUKEBOX

THE NEXT GENERATION
“OPTICAL DRIVE EMULATION”

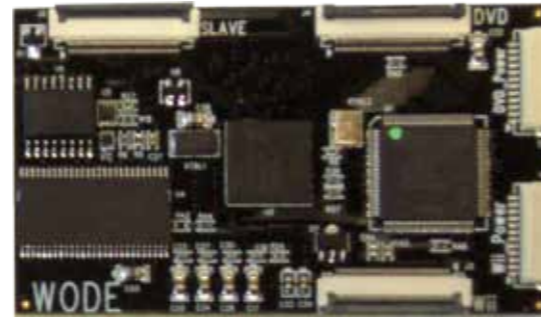


Installation Kit

The kit includes:



Wode board



Chip WODE



Insulating tape



Flat DVD



Flat WODE



Supply cable



■ PHASE 1 (Wii opening)

In this first phase you may need:

1. a small blade;
2. a small torx screwdriver;
3. a very small torx screwdriver (for watchmaker);
4. a tri-wing screwdriver (see picture)



To remove the little square plastic white sticker labels that cover 3 screws on the right part and 2 rectangular screws on the bottom of Wii use the small blade and try to lift them from by the edge without cutting the white plastic.

Try to raise them from below because these sticker labels tend to break.

With the non-cutting part of the blade, carefully remove the rubber square feet on the right side and the 2 rectangular feet on the bottom of the Wii.

First remove the system battery cover located on the right part of the Wii.

The only settings that will be lost are the system date and time.

This will not interfere with the downloaded channels, virtual console games, etc. Saves will not be lost.

Once the battery part is removed (1), you must remove the beneath screw (2).

Remove all the other screws as seen on the image below in any order.





Take off the front cover by rotating it towards the bottom in order to put it in front of the Wii. Disconnect the connector that keeps the face plate attached to the mainboard. At this point you can proceed removing the cover.



On the left part of the Wii, remove the two white covers and black cover of the GameCube ports. After this you will be seen 4 hidden screws.



Remove 2 more screws as shown in the picture in order to lift the plastic top cover of the Wii.



Next remove the 2 tri-wing screws as shown in the picture. This will allow the removal of the metal shield and expose the optical drive unit.



Remove the 4 screws on top of the optical drive unit.



Now lift the optical drive unit so it is off the screw support, and tilt it towards left side in order to put it next to the opened Wii unit. Be careful to not ruin the connector and the cable on the left side that connects the Wii mainboard to the optical drive unit.



The Wii is now opened and you can proceed with Phase 2.

■ PHASE 2 (Wode installation)

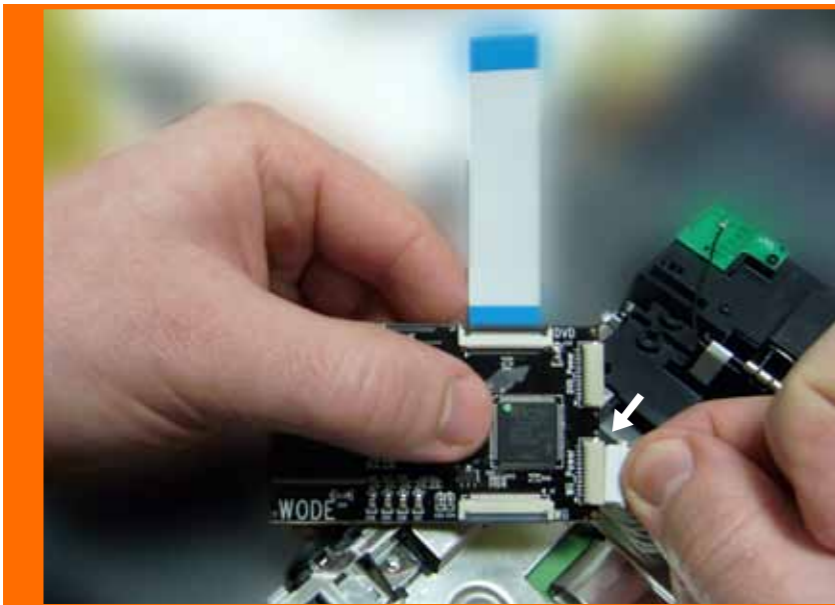
You can now disconnect the 2 cables from the connectors on the drive board. Disconnect the flat cable raising the little cover.



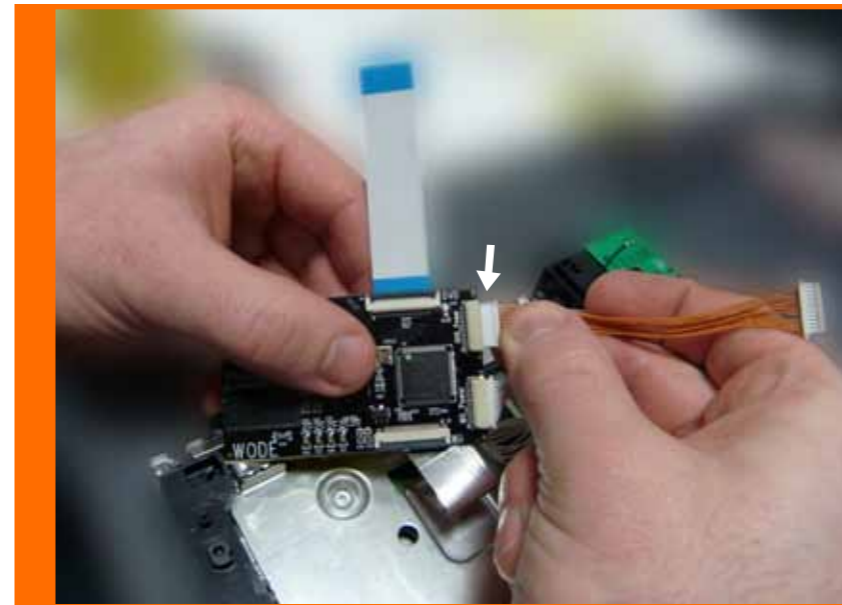
Connect the enclosed flat (short) cable to the latch clip labelled "DVD" in order to connect the Wode interface to the optical drive unit.



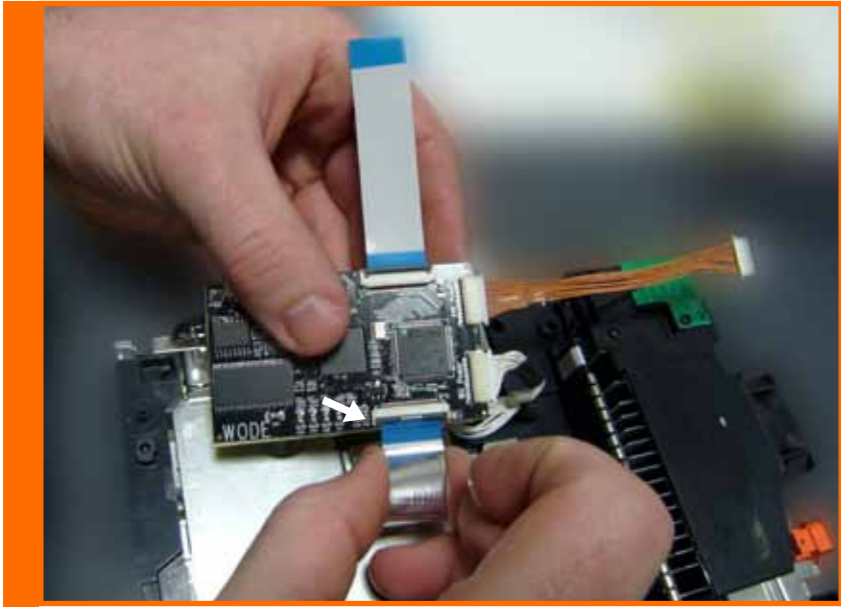
Connect the supply cable (that was connected to the optical drive unit) to the connector labelled "Wii Power".



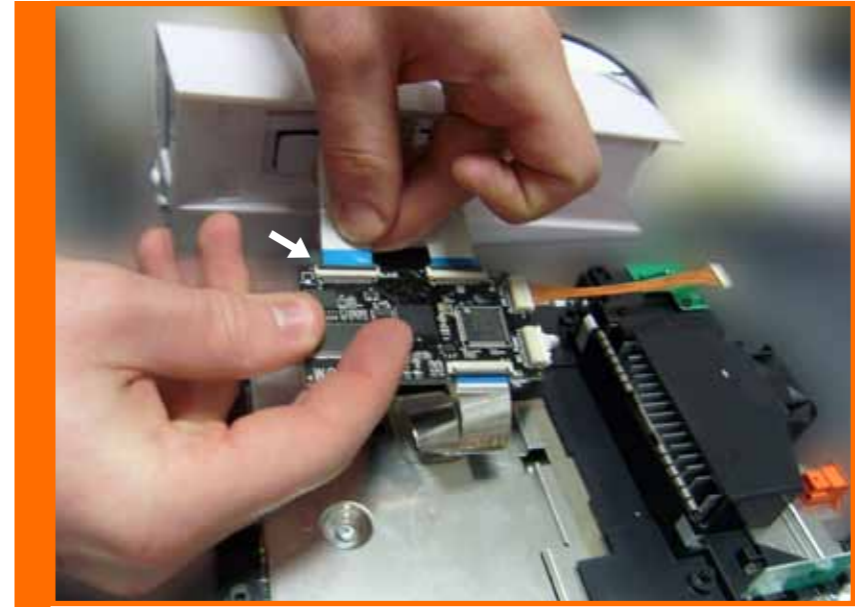
Connect the supply cable from the kit to the connector labelled "DVD Power".



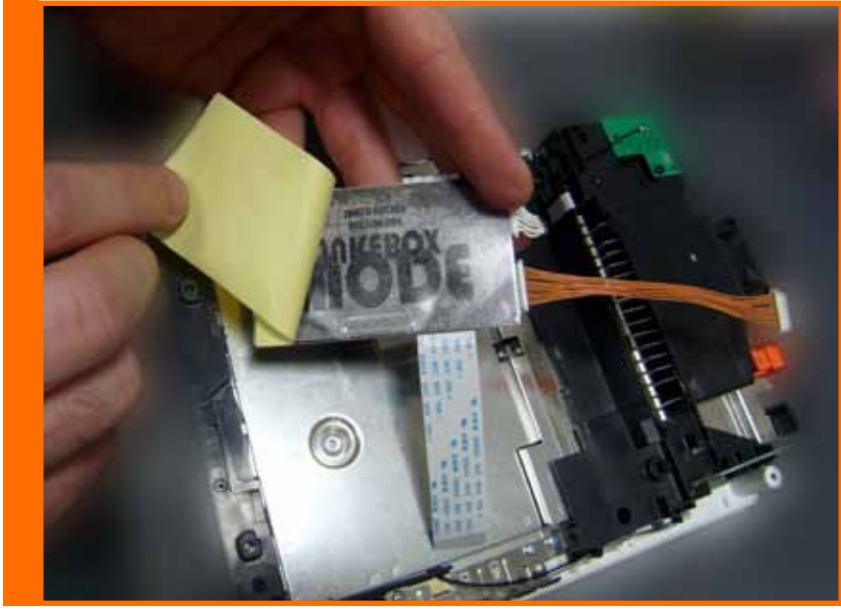
Connect the flat cable from console to the latch clip labelled "Wii" in order to connect the interface to the motherboard of the Wii.



Connect that long flat cable coming from Wode Vertical Stand to the latch clip labelled "SLAVE" in order to connect the interface to the Vertical Tower Display.



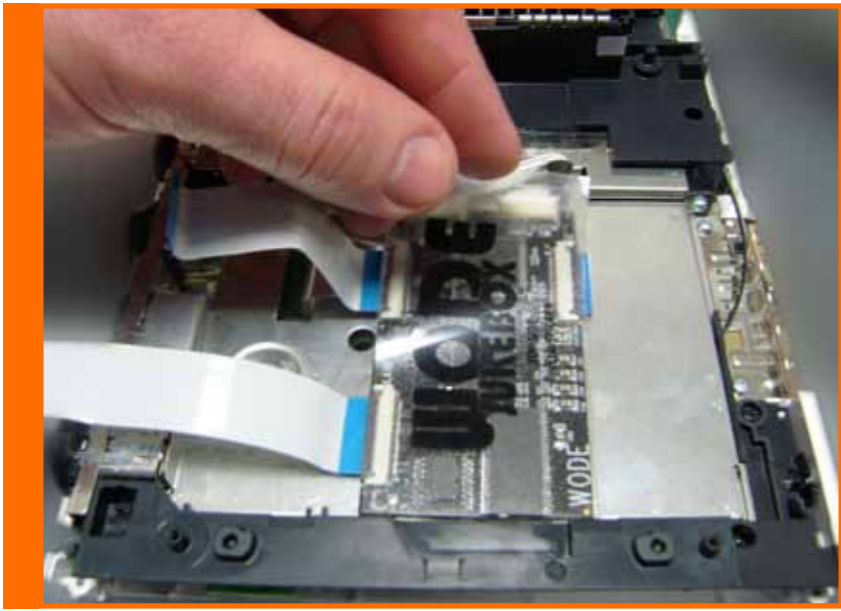
Peel off the film-sticker of the interface.



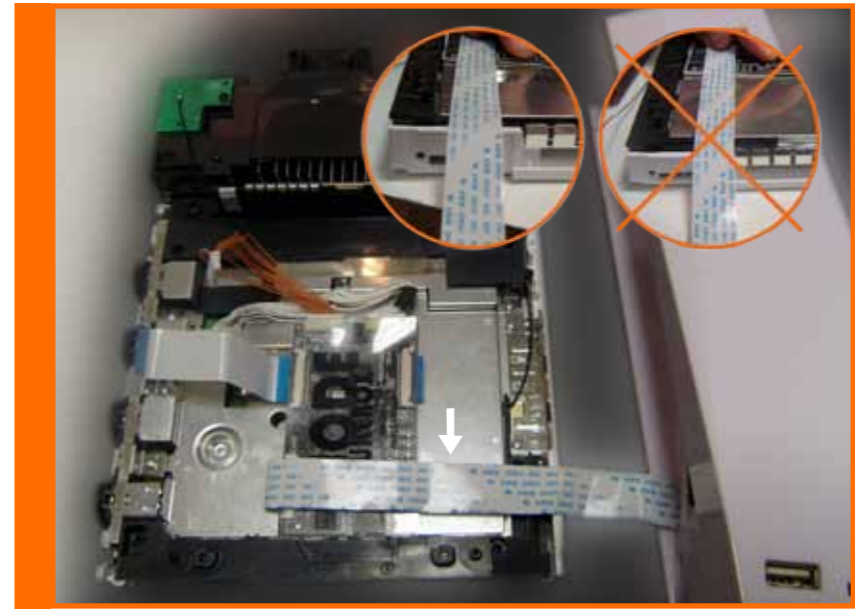
Place the interface in the position as shown in the screenshot.



Apply the tape on the top part of the interface in order to avoid possible contacts with the dvd reader.



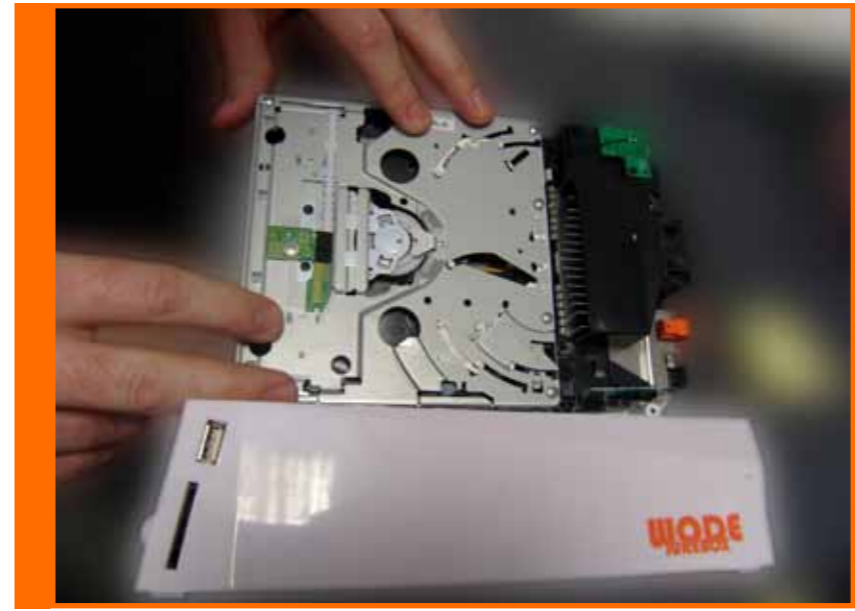
Set the long flat cable as shown in the picture.



Connect the short flat cable and the supply cable to the optical drive unit.



Now close the Wii and put all the screws back in their original locations.



Remove the film-tape of the Vertical Tower WODE Stand and insert the Wii.



Connect the USB cable of the Vertical Tower WODE Stand to the back USB port of the console. Now turn on the Wii.



The WODE is now installed and you can proceed with the configuration.



■ DISASSEMBLING AND INSTALLING VERTICAL STAND

(procedure necessary for example when user receive from retailer wode installed but with vertical stand apart disconnected)

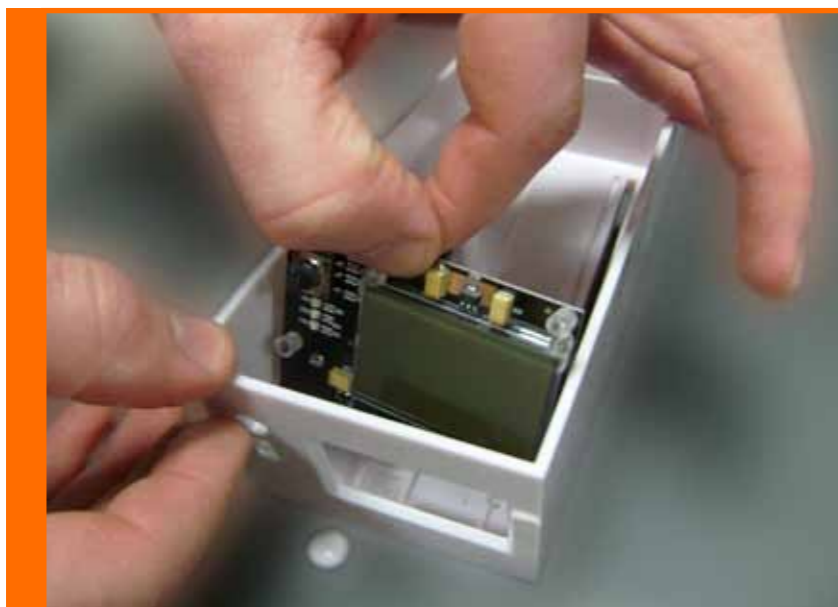
Remove the 2 screws under the Vertical Tower Wode and open it.



Disconnect the joystick knob.



Remove the Slave Board.



Then pass the long flat cable that comes out from the Wii through the open slot of the Vertical Tower.



Connect that long flat cable to the Slave Board.



Insert the Slave Board and re-connect the joystick knob.



Close the Vertical Tower WODE by sliding the base part as shown in the screenshot in order to conceal the Slave Board.



Lock the screws.



■ TROUBLESHOOTING